



Action Points and Summary 19 March 2015

Upcoming Consultations – please comment:

- Nine Elms on the Southbank –consultation closes 22 March email: shannonrice@tfl.gov.uk for extension. KOVF Board Member Aseem Sheikh will be coordinating a response following the meeting.
- Northern Line Extension; Nine Elms Underground Station Design – consultation closes 7 April 2015
<https://consultations.tfl.gov.uk/tube/nine-elms-underground-station-and-development>
- Statement of Community Involvement – consultation closes 14 April
<http://www.lambeth.gov.uk/consultations/draft-revised-statement-of-community-involvement-sci>
- Cultural Services by 2020 in Lambeth – consultation closes 24 April 2015:
<http://lambeth.gov.uk/consultations/cultural-services-by-2020>

Dates for the diary

- 28th March Friends of Vauxhall Park Easter Egg Hunt registration 10.30am
- 14th April 4pm Vauxhall Gardens Community Centre Special Meeting
- 15th April 7.30pm KOVF Neighbourhood Planning Meeting, Carmelita Centre
- 4 June 6.30pm KOVF Public Meeting, Carmelita Centre

Other Announcements

Cllr Chris Marsh, Prince's Ward, has resigned due to health. A bi-election will be held at the same time as the General Election on 7 May.

1. KOV updates

Tree of Heaven', Durning Library

23 February 2015 consultation closed. KOV meeting minutes submitted as part of commentary on this consultation. Outcome of decision awaited.

Oval Gasholders site

24 February 2015 event held. Many KOVF board members attended. KOVF made a representation about the nature of the consultation and received a reply from which will be placed on the website. (See (www.forumkov.wix.com)). The Planning Group will be considering how to respond further.

22-29 Albert Embankment site: planning application

Approved by Lambeth. KOVF objected and Board members A Hofling and D Boardman spoke against the proposal at the planning meeting. The details of the objection will be placed on the KOV website. One of the concerns was the claim that 700 notification letters were sent by Lambeth planning and yet neither VGERTA or KOVF, among others, received one – nor were any objections received prior to the officers report being submitted. This is pertinent because Lambeth planning are intending to alter the way people find out about planning applications and have launched a consultation on the Statement of Community Involvement (see above).

CS5 update

The main construction contract will start on 13th April.

Guidance on Understanding Licensing

This document, discussed at the previous KOVF public meeting, has been posted on the KOVF website for all to use – [link]

Vauxhall Food Garden Licence application

KOVF has written in support of this licence application for daytime activity.

Northern Line extension sale of land and Keybridge House

KOVF received a ruling from the Information Commissioner's Office supporting their request for information from Lambeth Council relating to these two matters under the Freedom of Information Act. The full ruling is available on the website [link]. A reply was due but Lambeth Council requested an extension which KOVF has accepted.

Neighbourhood Plan for KOVF area

KOVF's planning meeting on 11 March 2015 involved UCL's Bartlett School postgraduate students presenting their ideas and research supporting the KOVF Neighbourhood Plan. This was after many weeks of mentoring from the KOVF's Chair of Planning David Boardman and Deputy Rodney Ovendon. The research will be brought together in a seminar on 28 March and an invite has been extended to Lambeth Forum Network colleagues. Following this research KOVF Chair and David Boardman will be meeting with Lambeth Council to formally register the Neighbourhood Plan intentions and start the process of delivering a Neighbourhood Plan for our area. As many people as possible need to get involved at the next planning meeting.

KOVF Board

Since the last meeting, Jean Uzoma Vice-Chair of VGERTA had resigned.

2. Culture 2020

Presentation by Cllr Jane Edbrooke and Donna Wiggins, followed by Q&A from the floor. Consultation link above.

3. Vauxhall Gyrotory update – Presentation by Michael Keane, Martin Worthington and Eleanor Alexander about community ideas for revitalised public realm. Endorsed by the forum for submission to TfL as an alternative plan.

Meeting ended 8.50pm



**KOVF PUBLIC MEETING
CARMELITA CENTRE
7.00 PM THURSDAY 19TH MARCH 2015**

Draft Minutes

Note: All hyperlink references have a footnote with their web location and can be found on the KOVF [website](#)¹

1. Apologies and introduction from Chair

Apologies:

- Councillors:

Cllr David Amos, Cllr Joanne Simpson, Cllr Jack Hopkins

- KOVF Board members

Mark Harrison, Marilyn Evers and Jean Uzoma. The Chair thanked Jean Uzoma, Vice Chair of VGERTA who had decided to step down from the KOV Board.

A list of those registered at the meeting is given at Annex A

In attendance: Cllr Jane Edbrooke

The Chair reminded people to register and thanked Byron Green, KOV Board Member for the introduction of QR scan coding as a means of registering. She explained that for members who had joined sometime ago, it would be helpful if members could give their addresses and especially postcodes as this helped show representativeness for the Neighbourhood Plan.

The Chair thanked Board Members, Andrea Hofling and Chrys Loizou for their support with setting up the meeting along with Eleanor Elington KOV administrator. She apologised for the lack of catering on this occasion but promised that future meetings would include this.

2. Minutes of previous Public Meeting and KOVF updates

Note these minutes are arranged in Agenda order rather than the order they were discussed for clarity. At this point the Chair handed over to Cllr Edbrooke to make her presentation before heading off to another meeting shortly after KOVF so agenda item 3 was discussed before agenda item 2 below.

The minutes for the previous Public Meeting held on 5th February 2015 had been circulated via the KOVF website. They were agreed and presented for signature as an accurate record of events. The Chair reminded everyone that full notes were available on the KOVF website.

¹ <http://forumkov.wix.com/kov-forum>

The Chair reported that the KOVF Board had been very busy:

Tree of Heaven', Durning Library

23 February 2015 consultation closed. KOV meeting minutes were submitted as part of commentary on the consultation showing the pros and cons of keeping the Tree. The outcome of that decision by Lambeth Council was awaited.

Oval Gasholders site

24 February 2015 event held. Many KOVF board members attended. KOVF made a representation about the nature of the consultation and received a reply from which will be placed on the website. (See (www.forumkov.wix.com)). The Planning Group will be considering how to respond further.

22-29 Albert Embankment site: planning application

Approved by Lambeth. KOVF objected and Board members Andrea Hofling and David Boardman spoke against the proposal at the planning meeting. The details of the objection will be placed on the KOV website. One of the concerns was the claim that 700 notification letters were sent by Lambeth planning and yet neither VGERTA or KOVF, among others, received one – nor were any objections received prior to the officers report being submitted. This is pertinent because Lambeth planning are intending to alter the way people find out about planning applications and have launched a consultation on the Statement of Community Involvement (see above).

CS5 update

The main construction contract will start on 13th April.

Guidance on Understanding Licensing

This document, drafted by KOV Board Member with an expertise in matters of licencing Mark Harrison, had discussed at the previous KOVF public meeting. The Guidance was now published and available for free on the KOVF website as reference material on how to object to a licence and the importance of evidence to support concerns and complaints. Following the meeting KOVF was approached by one of speakers representing the Vauxhall Food Garden to consider their licence application. KOVF has written in support of this licence application on the basis of encouraging daytime activity and positive economic value for the area.

Northern Line extension sale of land and Keybridge House

KOVF had received a ruling from the Information Commissioner's Office supporting their request for information from Lambeth Council relating to these two matters under the Freedom of Information Act. The full ruling is available on the KOVF website. A reply was due but Lambeth Council requested an extension which KOVF has accepted.

Neighbourhood Plan for KOVF area

KOVF's planning meeting on 11 March 2015 involved UCL's Bartlett School postgraduate students presenting their ideas and research supporting the KOVF Neighbourhood Plan. This was after many weeks of mentoring from the KOVF's Chair of Planning David Boardman and Deputy Rodney Ovendon. The research will be brought together in a seminar on 28 March and an invite has been extended to Lambeth Forum Network colleagues. Following this research KOVF Chair and David Boardman will be meeting with Lambeth Council to formally register the Neighbourhood Plan intentions and start the process of delivering a Neighbourhood

Plan for our area. As many people as possible need to get involved at the next planning meeting.

Resignation of Cllr Chris Marsh

Cllr Edbrooke announced that Cllr Marsh would regretfully be stepping down as a councillor because of ill health. She expressed her regret and support for him and the forum extended their well wishes. The ballot to elect his replacement would be held on the same day as the General Election.

3. Cultural Services 2020 for Lambeth

Chair: Helen Monger, KOV Chair

Speakers:

Cllr Jane Edbrooke, Chair of the Arts & Libraries Committee

Cllr Donna Wiggins, supporting

See Annex B for presentation

Cllr Edbrooke explained that she regretted deeply that Lambeth Council was having to make £200m cuts to its spending because of budget cuts. In spite of losing over 1,000 Council staff, and reducing the wages bill, other cuts would also have to be made. Much of this would have to fall in areas where the Council was not under a legal obligation to provide services. Inevitably, library services, with less statutory protection, would be affected considerably. Her message throughout her presentation and when answering questions from the floor was that she was open to suggestions as to how to best allocate and organise the limited funds available. It was intended that the Minet and Waterloo library sites would be sold and the monies raised invested. The income from investment would be ring-fenced in perpetuity to fund library services. The local history archives would be transferred from the Minet library to Brixton and a new library site would be found in Waterloo.

Cllr Edbrooke's presentation gives details of a number of statistics and projections and stressed that the financial basis for some of the suggestions was set out in cabinet papers available on Lambeth Council's website associated with this consultation.

She then answered a number of questions from the floor.

Question 1

Q: What investment is being made to sports facilities in the Kennington Oval and Vauxhall area? There is very little provision at present: the nearest centre is the Flaxman Centre, which is out of area.

A: We are looking at investing in outdoor sports facilities in the north of the borough and considering working with partners to fund facilities.

Question 2

Q: What exactly are you planning for these outdoor facilities?

A: Upgrading of tennis courts at Vauxhall Park and the installation of an outdoor gym and an updating of Kennington Park.

Question 3

Q: Halving the budget for parks is going to mean that some which are currently closed at night will cease to be when the staff cuts come into effect. This will mean

that they will attract rough sleepers. This is a shame – particularly where all concerned have worked to achieve Green Flag status. Moreover, water features, such as paddling pools, will be shut down in other parks, which is also a shame. What are you going to do to deal with the problems caused by these cuts?

A: The Council is looking at how more fee-earning events being staged in parks can raise revenue, which will be used to plug the shortfall in funding.

Question 4

Q: New developments will bring about a big growth in population around Nine Elms. No new park is being created to cater for it and Vauxhall and Larkhall Parks will have to accommodate it. What are you proposing to do?

A: There will be increased Council Tax receipts from the new residents and CIL monies from the developers and these will go, in part at least, towards improving both these parks. We cannot deny that the cuts are devastating. The Local Government Funding Settlement's terms mean that poorer councils are affected more than wealthier ones.

Question 5

Q: What about these new residents who will use Lambeth parks but pay their Council Tax to Wandsworth Council?

A: Lambeth Council has been working with Wandsworth Council to ensure that Infrastructure needs are considered across the whole area. It is inevitable that there will be residents of Wandsworth who use Lambeth facilities and vice versa. The Linear Park, albeit not as much space as we would have liked is part of the arrangements set in place to provide public realm for new residents to offset some of the wear and tear on existing parks, including those in Wandsworth such as Battersea Park at the other end.

Question 6

Q: Why not exercise the right to hold a referendum to be allowed to raise Council Tax above statutory limits?

A: We won't do this because we don't think that voters would choose to pay higher Council Tax. We are legally allowed to raise Council Tax by a maximum of 1.99%, and we are doing that, but it will only raise an extra £5m. We would need to raise Council Tax by 20% to mitigate the effects of the budget cuts.

Question 7

Q: These cuts will wreck the library service in North Lambeth. How do you respond?

A: We are aware that these are big cuts. We are not precious and will listen to ideas for how to minimise the impact.

A: There is flexibility within budgets and we can re-profile so long as the bottom line is unchanged.

Question 8

Q: What is the bill for councillors' expenses?

A: All councillor salaries are listed on Lambeth's website. I [Cllr Edbrooke] take home £39k pa and have no pension or maternity allowance. Councillors who are not on Cabinet – backbenchers - take home about £10.5k pa. There are 10 cabinet members and 63 councillors in Lambeth. The information is in the public domain published on Lambeth's website relating to accounts.

[The Chair intervened and reminded the audience to stick to questions about Culture 2020]

Question 9

Q: Is there a budget to publicise to the public how they can donate to Friends groups etc?

A: No. But it is still early days. Some provision could be made.

Question 10

Q: Could you send or post the link for the financial information and budget for libraries?

A: It went online today and we will email the link to KOV for circulation.

Question 11

Q: Is the £10m expected from the sale of Waterloo and Minet library sites ring-fenced for the borough's libraries in perpetuity?

A: Yes. We are looking at how to best invest this capital in an ethical way. We seek to achieve a yield of £350 - £400k pa. Libraries will be able to bid for funds from it. Legally, we cannot spend capital on running costs. This is a creative workaround to use capital to provide for revenue expenditure which safeguards the money for the future, should a Chancellor of the Exchequer decide to cutback local authority funding even further.

Question 12

Q: Who are you working with to work out how to invest this money?

A: Capital Community Foundation. They have a track record in this field.

4. TfL's Public Realm Design Guide

Chair: Aseem Sheikh, KOV Board Member and Director at Vauxhall One leading the Change Group.

Speaker:

Shannon Rice, Urban Planner, TfL

See Annex C for presentation.

The Chair of the session opened by explaining that a comprehensive Guide had been launched to cover a wide area of details relating to public realm.

Ms Rice reminded those present that the official deadline for commenting on the consultation was 22 March, but that TfL would offer a one week extension for those that emailed her to request it.

While the Guide had not yet been incorporated into either Boroughs' formal guidance, it had 'senior level buy in' from them both.

Her presentation began with an overview of the 120-page design guide TfL had produced for the area known as Nine Elms South Bank. In it, she explained, TfL was setting the standard for high quality of design and materials used by urban planners, designers and landscapers for the public realm. They sought to balance the need to preserve the diversity of the different component neighbourhoods, whilst weaving them all together into a coherent whole. It was noted that there were a number of different developers and other 'players' in the project.

Key elements of the plan were for a new linear park, an improved river walk, possibly a new pedestrian and cycle bridge between Nine Elms and Pimlico, strategic green links and greater permeability of the raised railway viaduct arches to increase access from the hinterland to the river frontage. The Northern Line extension stations at Nine Elms and Wandsworth Road would be part of this.

Shannon explained that Lambeth and Wandsworth councils were committed to cooperation on the project, which spans the two London boroughs.

The GLA has agreed that Vauxhall be designated as a zone that can have taller buildings than normally allowed.

TfL was working with Susie Gray (of Wandsworth Council) to find ways to incorporate art into the public realm programme.

Issues of surface water, and potential flooding, would be addressed.

Planting would be considered carefully: it was very important. This would include ground level vegetation and higher up (window boxes etc).

It was expected that a new 'embassy quarter' would emerge around the site of the new American Embassy: other countries were considering moving their Embassies away from their current sites to the NEB area. This would bring new challenges as to how to deliver an appropriate level of security whilst not having large numbers of unsightly concrete blocks and bollards in evidence.

Shannon finished by outlining two of the different ways in which TfL had conducted public consultation: pop up events and letters. She trusted that the message had reached its target audience. She then answered questions from the audience.

Question 1

Q: Who decided to change the name to 'Nine Elms on South Bank'? It used to be 'Vauxhall Nine Elms and Battersea'. This change makes me fear that there has been a change of emphasis and there will be less investment in the hinterland away from the riverside.

A: Please comment to TfL.

Question 2

Q: Your presentation showed play areas on the linear park. How can this be possible: surely there won't be enough space for them?

A: We are just suggesting that this is an area where play is needed and have yet to work out the details.

Question 3

Q: What are your timescales for this?

A: 15 – 20 years.

Question 4

Q: I heard that Steve Read, when he was Leader of Lambeth Council proposed that 'Vauxhall' be dropped from the title [this refers to Q1 above] and that many other councillors: Lib Peck, now Leader, included voted against this. Now that Steve Read

is no longer in this post, it might be the moment to get 'Vauxhall' reinstated to the title...Vauxhall has a long history and should be reinstated.

The Chair of the session asked for a show of hands and the majority of the audience were keen to acknowledge the importance of Vauxhall within the area.

Question 5

Q: Nine Elms Lane has become very noisy. Can the surfacing be changed to reduce this?

A: The plan for that road is to widen the pavement and plant trees, which should go some way to making it quieter for shoppers and pedestrians.

Question 6

Q: I love the presentation but I am afraid I am scared and cynical.

Question 7

Q: Who 'owns' the design guide and is it mandatory?

A: The design guide is not going to be incorporated into borough plans, but there is lots of senior buy in – it is felt important to create a combination of homogeneity but also different character areas.

Question 8

Q: Given the name, can it be arranged that nine elm trees are planted in this area?

A: Yes – that is a definite possibility

Question 9

Q: How likely is it that the pedestrian/cycle river crossing between Nine Elms and St George's Drive will be built?

A: Jamie Eagles is the best person to answer this question.

Question 10

Q: Please relay to your bosses how much chaos this building work will cause. And ask for mitigation measures, such as the easing of parking regulations.

A: We are working on phasing solutions and recognise the problems the works will cause.

Question 11

Q: The demand for public transport will increase as the population of the area increases, so please don't reduce the size of the bus station...

Question 12

Q: It vexes me that my comments made at the outset appear to have been ignored and now I am being asked to comment on detail, such as waste bin colour, dimensions and petty street furniture design.

A: Yes – we are asking for comment about detail, but we are also asking for comment about more fundamental matters. We wouldn't ask if we weren't prepared to listen and accept the comments made.

Question 13

Q: We are developing at densities three times higher than recommended in the London Plan. We need more infrastructure to accommodate this. The redesignation from 'Vauxhall Nine Elms' to just 'Nine Elms' shows that the developer and TfL's

emphasis is on the riverside strip. The OAPF guidelines are regularly breached at Vauxhall and now Albert Embankment, will TfL make sure that just as much attention is given to the area beyond the railway and to making sure railway arches are re-activated.

A: Our thoughts are set out in the guide.

Question 14

Q: I trust you won't take up the York stone on the Albert Embankment

A: No – heritage assets are safe.

The Chair of the session concluded by saying that he would assemble comments on behalf of KOVF to pass back to TfL for consideration.

Helen Monger resumed the Chair and thanked Aseem Sheikh for his work in delivering this interesting session and Shanon Rice for responding to all the queries raised.

5. Vauxhall Gyratory

Chair: Helen Monger

Speakers:

Michael Keane, KOV Board Member

Martin Worthington, working with Save Vauxhall Bus Station campaign

Eleanor Alexander, DSDHA Architects

See Annex D for Michael Keane's presentation and Annex E for DSDHA's presentation.

The Chair explained that the KOVF Board, especially Michael Keane had been very busy working with Martin and Eleanor on set of new ideas for the Gyratory which would be presented to the Forum. The Chair stressed it was important to ask questions and hoped that the meeting would be able to endorse this as a suitable option to present at the end of the month to TfL as the community's response to consultation so far. On behalf of Forum the Chair thanked all the speakers for their considerable work so far.

Michael compared his proposal for the changes to the Vauxhall gyratory system to TfL's last set of proposals, highlighting the key differences. His message was that this was a chance to achieve something 'magnificent' for Vauxhall and that it should not be lost.

A fly-thru of the area is available on <http://forumkov.wix.com/kov-forum>.

Martin Worthington, explained how his proposals and those of Michael had come together and that they had undertaken detailed analysis of bus routes, visitor flows, high street and job creation.

Eleanor Alexander stated that DSDHA was a firm of architects, specialising in the design and promotion of public realm, which had its offices on Kennington Lane. Its principal, Deborah Saunt, had attended a presentation by TfL of its proposals and she had concluded that she could help with producing an alternative which would deliver a better and more efficient environment and transport hub to those who lived, worked and passed through the area. The practice has not been commissioned to

produce its plans being presented tonight but had offered their services for free running a very helpful workshop prior to this meeting.

DSDHA's proposals supported Michael Keane's proposal for a green link extension and a different road layout to TfL's proposals. 100 people had been surveyed about their response to the area of Vauxhall in question and this had shaped the proposals for changed presented tonight which would be the subject of technical review by TfL.

There were questions from the floor at the end of the presentations.

Question 1

Q: This proves what bus station supporters have said all along: there is space to keep the bus station and improve road junctions.

A: Yes

Question 2

Q: The green route is brilliant. Let's press the developers to embrace it.

A: We are trying to engage with TfL and want your input

Question 3

Q: Michael – your traffic flow plan is fantastic. Please clarify though: do you know that the traffic flow will work?

A: We've done a lot of analysis on this. I had to Freedom of Information TfL and have only had the data I need for two weeks and am still analysing it. I am confident my plan works, though there is more analysis to be done to improve it further.

Question 4

Q: The public realm proposals sound exciting. I think an exit from the station onto Kennington Lane would be a good idea. I agree that the area doesn't need a new shopping hub to be built: it just needs the high street that is there already to be opened up. I think the proposals to link Cobalt Square with the underground with an exit would be successful.

A: Thanks. As an example, one of the 100 people surveyed said that they liked using the Nando's there, which is one of the busiest in the country, and yet while it is close to the station, many commuters don't access it.

Question 5

Q: It is an exciting design. How do you see the integration of the new centre working with the existing high street?

A: It's about diversity and not duplication. We believe the high street can be for the little, niche shops and the big names can be in the new centre.

Question 6

Giles Semper, Vauxhall One: We are excited by these proposals too and we are always happy to help where it involves improvement to the Vauxhall One district. Jobs and employment space are critical for us, as is an open and pleasant environment, which is something that benefits both businesses and residents.

Question 6

Q: Michael knows I think this scheme is fantastic. Have you thought of getting in touch with the media – 'Evening Standard', for example? You've only got one shot to convince TfL?

A: No. Not at this stage. We have a new KOVF board and we want to re-engage positively with TfL. I think TfL regret not going for this option 20 years ago and I want to encourage them to go for it now. I want to avoid blogging or tweeting about this or engaging in any use of social media to discuss it in an open and transparent way.

Question 7

Q: Speaking on behalf of local business, I'd like to have another Green Links meeting to keep the pressure up on TfL.

A: I hear what you are saying, but I think this plan will ultimately prevail.

6. AOB

The Chair asked for questions from the floor. Rodney Ovendon flagged up a meeting on 28th March about 2 form entry for Archbishop Sumner school.

7. Date of next KOVF meetings:

- 15 April 2015 7.30pm Carmelita Centre for Neighbourhood Planning
- 4 June 2015 6.30pm Carmelita Centre for next Public Meeting

The Chair closed the meeting at 8.50pm.

Annex A - Registration

Board Members present:

Helen Monger
Andrea Hofling
Michael Keane
David Boardman
Chrys Loizou
Byron Green
Aseem Sheikh
Ross Davies

Elected Representatives present: Cllr Jane Edbrooke, Oval Ward

Lambeth Officers:

Donna Wiggins
Gerry Evans

Other attendees recorded:

Charlotte Wills	Shannon Rice
Danny Walsh	Gareth Boyes
Mandy Knight	Felicity Astroulakis
Ian Taylor	Cristina Fernandez
Morna Hinton	Susan Smith
Jane Champion	Edith Holtham
Giles Semper	Sally Doyle
Rodney Ovenden	Mark Ennals
Philip Inglesant	Louise Norwood
Hannah Renier	Wendy Rigg
Elizabeth Scott	V Wallis
Janey Abbot Anderson	Robin Hood
Pauline Gaunt	Carroll Falconer
Helen Irwin	Eleanor Alexander
Sylvia Sumira	Martin Worthington
Graham McKerrow	David Morris
Laura Swaffield	Lesley Leuer
Marjorie Landels	Jeremy Orme
Emily Elkington	

Annex B

Cllr Jane Edbrooke

Culture 2020

Public Consultation

30th January 2015 until 24th April 2015



Lambeth Council's Budget 2015/16 to 2017/18 headlines are:-

- Council set a 2015/16 **Net General Fund Budget of £291 million.**
- Our **core funding** has been **cut by 50%.**
- We have saved about **£100m since 2010**, but now have **1,000 less staff.**
- Over the next three years we have a **funding deficit of £90m.**
- Our **Budget proposals close the gap by £72m**, but with **£18m of cuts still to find by 2018.**



Lambeth Council's Budget 2015/16 to 2017/18 headlines are *(continued)*:-

- We know we spend over **half our money on vulnerable residents** and are committed to protecting them – the elderly, families and young people.
- So we **also have to ensure we maximise our income and its collection** from council tax, business rates, rents and fees and charges to pay for services.



Culture 2020 budget agreed and not subject to consultation

Service area	2014/15	2015/16	2016/17	2017/18
Libraries and Archives	£3.796m	£3.796m	£2.996m	£2.996M
Heritage	£220k	£220k	£220k	-
Parks and open spaces	£4.459m	£3.559m	£2.259m	£2.259m
Sports and physical activity	£1.953m	£1.953m	£1.253m	£1.253m
The arts	£65k	£65k	£65k	£65k
Budget	£10.493m	£9.573m	£6.753m	£6.573m



Culture 2020 £6.5m investment

- Let's get active
- Safe and interesting spaces
- The great outdoors
- Be inspired
- The bigger picture
- Showing off



Our Library proposals

- Clapham, Brixton, Streatham, West Norwood and Tate South Lambeth will lead our statutory service
- Increased opportunities for residents to volunteer and work alongside professional staff.
- Digital community space for Brixton Rec
- Full review will look at projected population growth
- Hub and spoke model will support small unstaffed lending libraries in community spaces
- £10m endowment fund: Asset sales



Community Libraries

- A hub and spoke model with town centre libraries supporting small unstaffed libraries in community places.
- A £10m endowment that will establish the Lambeth Community Library Fund, which will provide between £350k - £450k (revenue) in perpetuity.
- A Lambeth Library Capital Challenge for Bishop and Vassall wards.
- Community-led approached in Carnegie, Durning and Upper Norwood Joint Library.

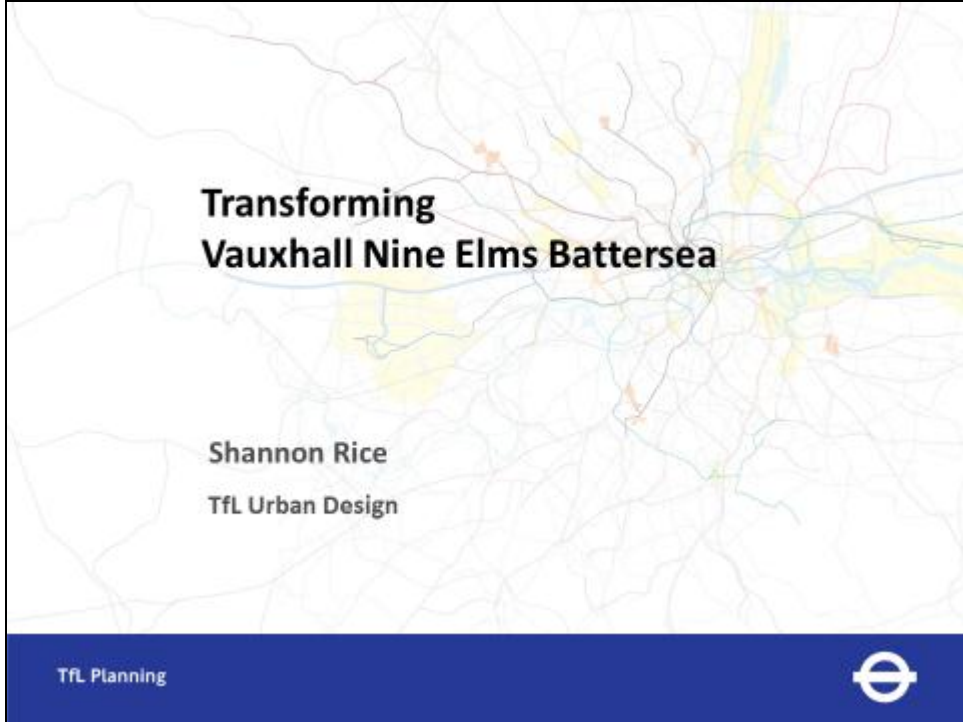


Next steps

- Consultation closes on Friday 24th April 2015
- Reflect and review period
- Develop a set of recommendations that are legal and within the resources available
- Implementation Plan



Annex C
Shannon Rice, TfL



NESB Context:

Changing land uses, increasing density & connectivity

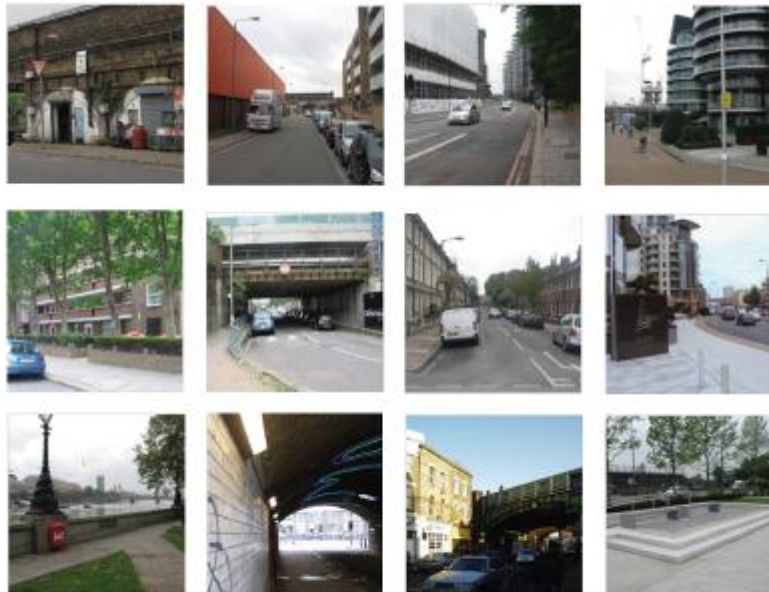
Transformation: More like part of Central London than inner south London

- Central London densities
- Office/commercial development, plus retail
- Major increase in residential units
- Fundamentally changed travel patterns

Transformation of the physical environment



TfL Planning



TfL Planning



- 195 hectares
- 20,000+ new homes
- 20-25,000 new jobs
- 37,500 new residents
- 200,000m² of mixed use development
- 60,000m² of retail
- 160,000m² of new office space

TfL Planning 

Delivering the vision

Nine Elms Vauxhall Partnership

Wendover Investments **Plus: Local residents**

TfL Planning 

Planning Context

- NESB in Central Activities Zone (CAZ)
- VNEB OAPF adopted as SPG in March 2012
 - ✓ Northern Line Extension
 - ✓ Significant intensification
 - ✓ Improved public realm



TfL Planning



Northern Line Extension

- £1bn two-station extension funded by developers
 - ✓ 2015: Main works start
 - ✓ 2017: Main tunnel drives complete
 - ✓ 2020: Extension in operation



TfL Planning



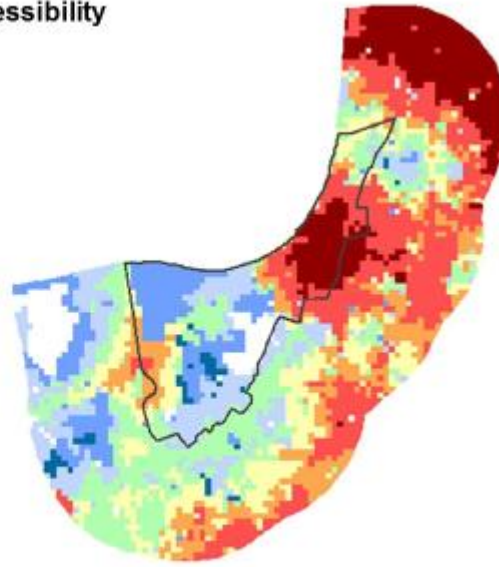


Transforms accessibility

2014 PTALs

PTALs

- 6b
- 6a
- 5
- 4
- 3
- 2
- 1b
- 1a
- 0



TfL Planning



VNEB OAPF - Public Realm Components



- 1. New linear park
- 2. Improved river walk
- 3. Improved road environment
- 4. New pedestrian and cycle bridge
- 5. Strategic green links to the river

TfL Planning





Mayor's Roads Task Force (2013)

Three main aims:

1. Deliver better, active and inclusive places and new city destinations
2. Transform conditions for walking, cycling and public transport
3. Maintain an efficient road network for movement and access

PLUS

Use of **Street-Types Approach**



TfL Planning 



Core Strategy, Adopted Oct 2010

Policy PL 11

Improve variety, quality and access to available employment sites ~ Nine Elms/Queenstown Road area

Creation of a new mixed use quarter south of Nine Elms Lane and provide a new permeable structure with high quality buildings and streetscapes

Create a better centre at Vauxhall, including the provision of new shops and services and improvements to the Nine Elms Lane and Wandsworth Road frontages.

For all: Working in close partnership with LB Lambeth and all key stakeholders.

TfL Planning 



Lambeth Local Development Framework - Core Strategy

- **Spatial Vision** - Support the regeneration and renewal of the London Plan OA's at Vauxhall/Nine Elms/Battersea
- Maintain and develop the South Bank
- **Policy S4** - Promoting walking and cycling, via public realm, transport and highway infrastructure.
- **Policy S9** – improve the quality of the public realm to support regeneration objectives

For all: Working in close partnership with LB Wandsworth and all key stakeholders.

TfL Planning



Draft Lambeth Local Plan (2013)

- **Policy PN2 Vauxhall** – create new district centre at Vauxhall Cross
 - ✓ High-density development
 - ✓ Affordable retail
 - ✓ Expansion of evening economy
 - ✓ Railway arches as active spine
 - ✓ New and improved links to Thames
 - ✓ Connect and improve green spaces
 - ✓ Supporting infrastructure
 - ✓ Strong sense of place



TfL Planning





Vauxhall SPD (2013) Principles

Placemaking
Connects and improve green spaces
Streets and spaces

Reconnect Vauxhall to the river

Reinforce neighbourhood destinations



Sustainable mix
New district centre
High quality transport
Supporting infrastructure



Public Realm Design Guidance



Purpose

Creation of a coherent approach to public realm design across the many and varied developments

Scope

- ✓ General design principles
- ✓ Spatial and route hierarchies
- ✓ Character areas
- ✓ Planting design + biodiversity
- ✓ Materials and furniture
- ✓ Lighting
- ✓ Sustainable drainage
- ✓ Safety and security
- ✓ Temporary measures

TfL Planning



Structure

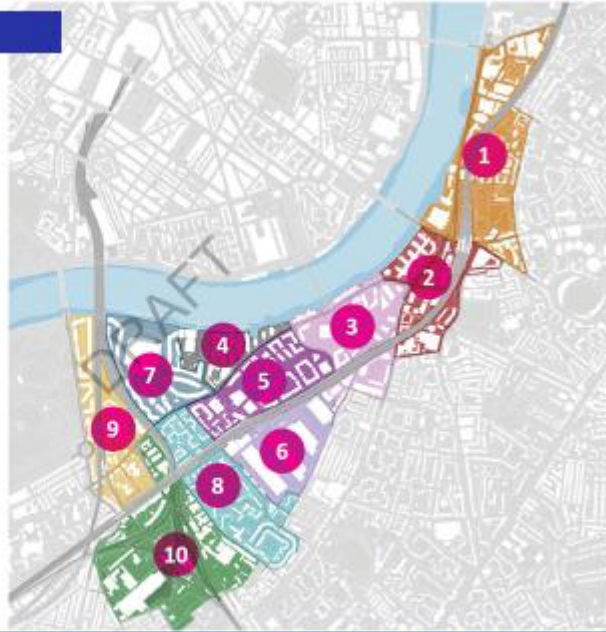
1. Introduction and common themes
2. Structure of the public realm across the NESB area
3. Identifies how the public realm structure applies across the ten character areas
4. Identifies design principles, guidance, good practice and standards for different aspects of the public realm



TfL Planning



Character areas



TfL Planning



Spatial hierarchy

- Key: Spatial Hierarchy
- Principal items
 - Principal markers and structures
 - Secondary markers and attractions
 - Principal transport nodes
 - Principal Greenpace
 - District and local centres
 - Thames Path (Blue Route)
 - Barons Park Road - New Elm Lane, West Endamers (Red Route)
 - Linear Park, Pressure Corridor, Mung Lane (Green Route)
 - Entry Connectors



TfL Planning



Public Space Network

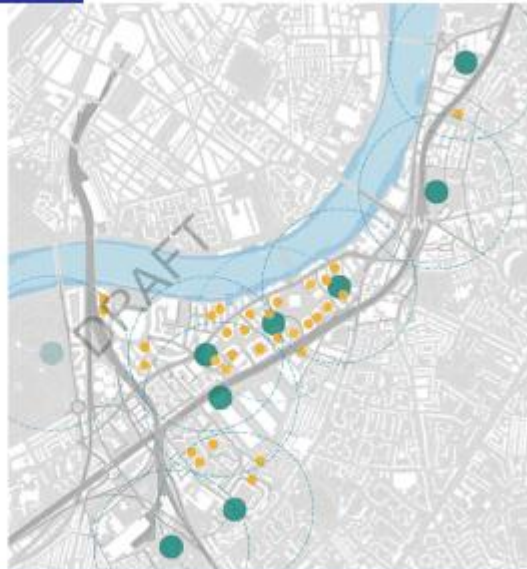


TfL Planning



Recreation, play and leisure

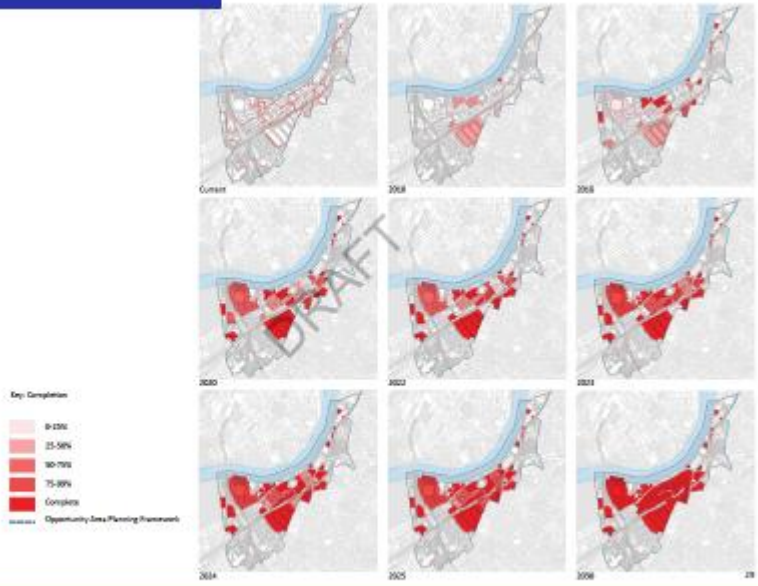
- PLAYABLE SPACE KEY**
- Local / Neighbourhood Playable Space (200m catchment)
 - Neighbourhood Playable Space and Sports provision
 - Indicative location of Overlapping Playable Space



TfL Planning



Phasing



Character areas



Street furniture



TfL Planning



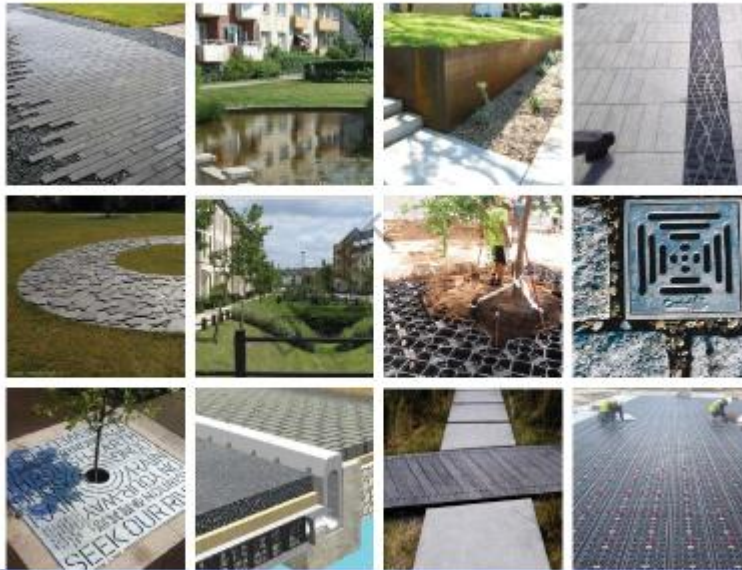
Lighting and art



TfL Planning



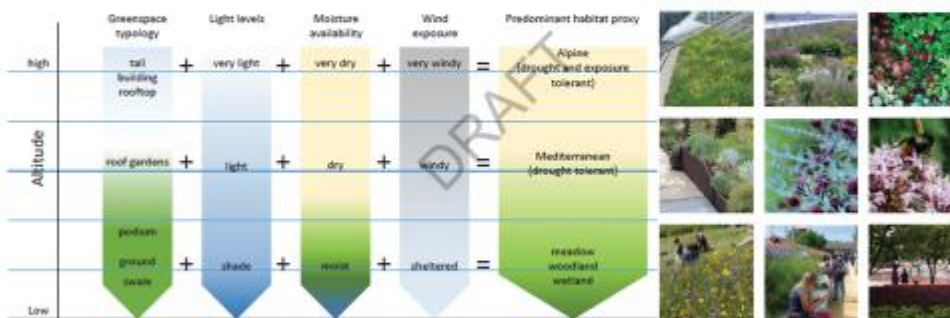
Surface water attenuation



TfL Planning



Planting



TfL Planning



Security



Thank you

shannonrice@tfl.gov.uk

**Annex D
Vision for Vauxhall
Michael Keane**

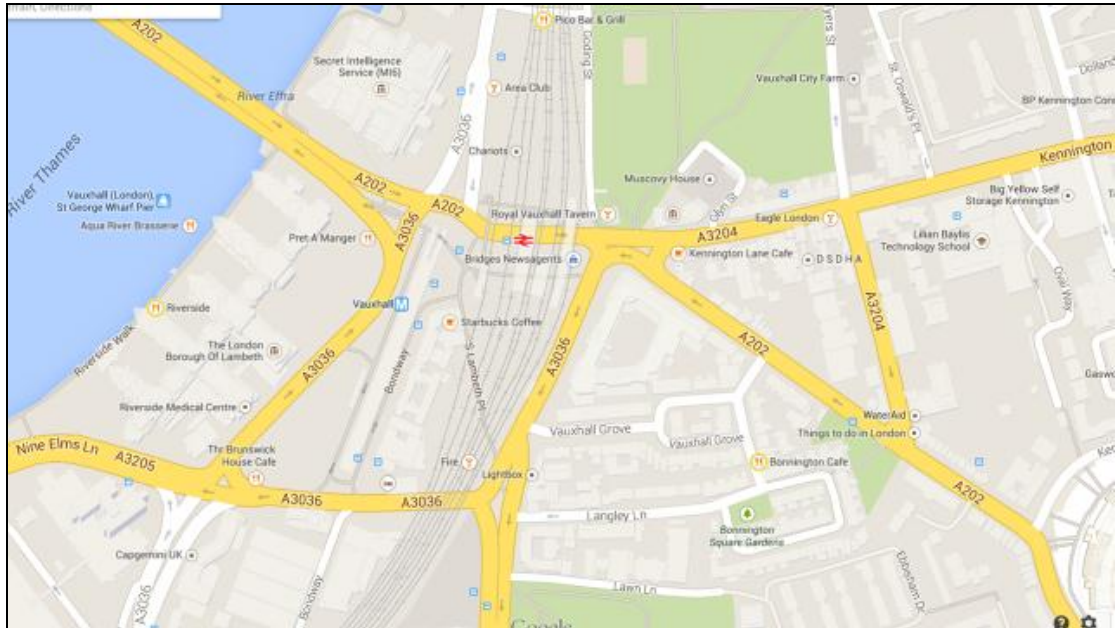


Public Meeting 19 March 2015

VISION FOR VAUXHALL

- Michael Keane
- Martin Worthington
- Eleanor Alexander (DSDHA)





COMPARISON OF TfL AND ALTERNATIVE PLAN

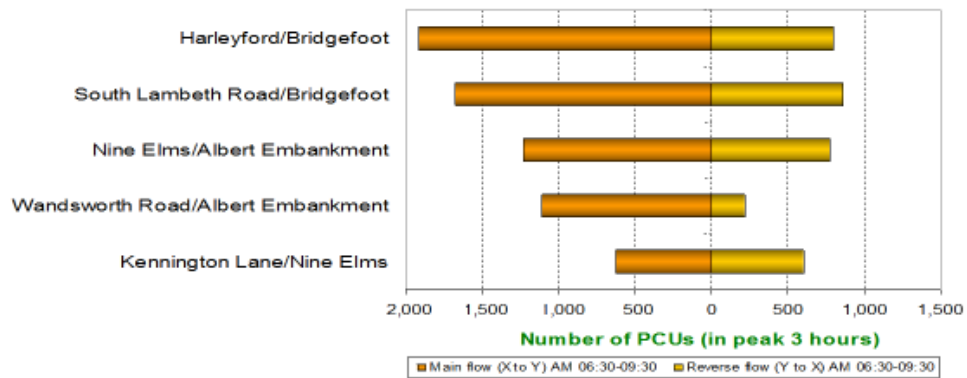
Measure	TfL Proposal	Alternative
Overall Road Safety	✗	✓
Overall CO2 Emissions/ Air quality	✗	✓
SRN resilience	✗	✓
Journey time/Distance travelled (Motor vehicles)	Main gyratory ✓	Main gyratory ✗
	Overall ✗	Overall ✓
Journey time/Distance travelled (Buses)	✗	✓
Congestion/delays	✗	✓
Jobs/financial benefits	✗	✓
Public spaces	✗	✓

COMPARISON OF TfL AND ALTERNATIVE PLAN

Measure	TfL Proposal	Alternative
Overall Road Safety	✗	✓
Overall CO2 Emissions/ Air quality	✗	✓
SRN resilience	✗	✓
Journey time/Distance travelled (Motor vehicles)	Main gyratory ✓ Overall ✗	Main gyratory ✗ Overall ✓
Journey time/Distance travelled (Buses)	✗	✓
Congestion/delays	✗	✓
Jobs/financial benefits	✗	✓
Public spaces	✗	✓

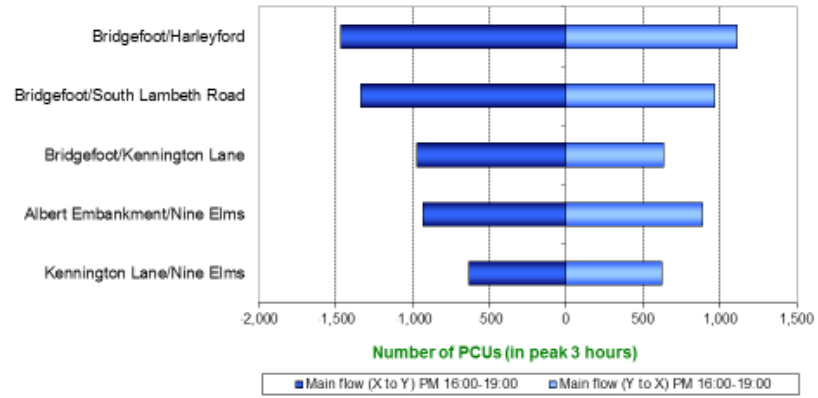
AM TRAFFIC MOVEMENTS

(Official TfL November 2013 Study)



PM TRAFFIC MOVEMENTS

(Official TfL November 2013 Study)



Annex E
Vauxhall Gyrotory plan – DSDHA