

**KOV Forum Newsletter –  
Neighbourhood Plan  
progress, EU Referendum  
- register to vote reminder,  
Cherry Walk plans at  
Vauxhall Pleasure  
Gardens, Lambeth  
Community Pride  
Awards, Newport Street**

# gallery updates, 8 Albert Embankment Open day & much more...

**Dear Members & Friends**

Please find below our latest news & updates:

## **Next KOV Forum Public meeting**

This week KOV registered with Locality to secure funding for it's Neighbourhood Plan. The steering group are also working on contacting those, at our last public meeting, who volunteered to help launch the plan.

The next KOV Forum public meeting will take place on the 16th June 2016 at the Carmelita Centre. More details to be released soon



### **Local Library News**

KOV welcomes the Council's decision announced in May's Lambeth Talk, to maintain services with exiting opening hours at both the Tate South Lambeth and Durning Library.



### **The Durning Library – Making Candy Floss Talk: 16th May**

Making Candy Floss from Pillows: 16th May 2016. An insight into multi-sensory books and storytelling! Bag Books is a Lambeth-based charity and the only organisation in the world publishing multi-sensory books for people with severe learning disabilities! Each book takes 7 hours to construct in their craft

workshop off Wandsworth Road! They are found in 93% of UK Special Schools and as far away as Japan and Australia! Dean Casswell's talk is part of Lambeth Libraries' Readers & Writers Festival.



**Back2Netball Programme at The Black Prince Trust**

The BPT is launching a FREE 12 week Back2Netball programme at the BPT community hub (Outdoor multi-sport pitches) in partnership with England Netball and Fight for change. We have pushed this back to next week to build up an initial core group of participants. We collectively aim to use netball to engage/re-engage 16+ females back into sport enabling them to challenge themselves and each other to enhance various aspects of their personal development, be it confidence, getting active or interacting with people they otherwise would not.

It is an open session for all females aged 16+. Please support us by promoting/encouraging any/all 16+ females that would you know of in your network that would like to take part.

When: 19th May 10.00am – 11.00am

Location: 5 Beaufoy Walk off Black Prince Road Lambeth  
SE11 6AA





## BACK TO NETBALL

Thursday

10-11am

Black Prince Community (SE11 6AA)

Starting 12<sup>th</sup> May

For More information please contact –

Polly 07909251289

[Polly.howell@englandnetball.co.uk](mailto:Polly.howell@englandnetball.co.uk)



Back to netball

CentralLondonSouth

## **Knights Walk paving update**

The works will be undertaken in two phases with the scheduled start date for phase one being 31st May.

Phase one will include:

- Tarmac to access road (approx. 240sqm)
- De-slab large area in main square and replace with top soil/grass seed (approx. 100sqm)
- De-slab large area nearest to Kennington Lane and replace with top soil/grass seed (approx. 60sqm)
- Take up all broken slabs that are causing a trip hazard (there are an abundance of cracked slabs that will be addressed when we move to phase two).

Knight's Walk residents are going to be directly informed about the details. Plans for phase two are being developed.





## **The Magpie Kitchen: Celebrating Our Second Year – 19th and 20th May**

Join in for this exclusive event as they celebrate their 2nd year! This month, enjoy a Middle Eastern treat as they also celebrate Claudia Roden's 80th Birthday.

Friday is nearly booked out, but contact us soon if you want to reserve your space for The Magpie Kitchen. Tickets are £20 for a three course meal! Dinner served from 7.30 pm (Discounts available if booking more than 5 people.)

For more information visit their website:

[rootsandshoots.org.uk/news/magpiemay2016](http://rootsandshoots.org.uk/news/magpiemay2016)

(<http://www.rootsandshoots.org.uk/news/magpiemay2016>)

# CELEBRATE TWO YEARS 19th and 20th May

## Newport Street Gallery Update

The first solo exhibition of work by the American artist Jeff Koons since his Serpentine show in 2009, will be presented at the Newport Street Gallery. Titled 'Now' the show will be curated by Damien Hirst, and run for five months, from 18th May to 16th October 2016.



### **Northern Line Extension (NLE) - how to be kept up-to-date**

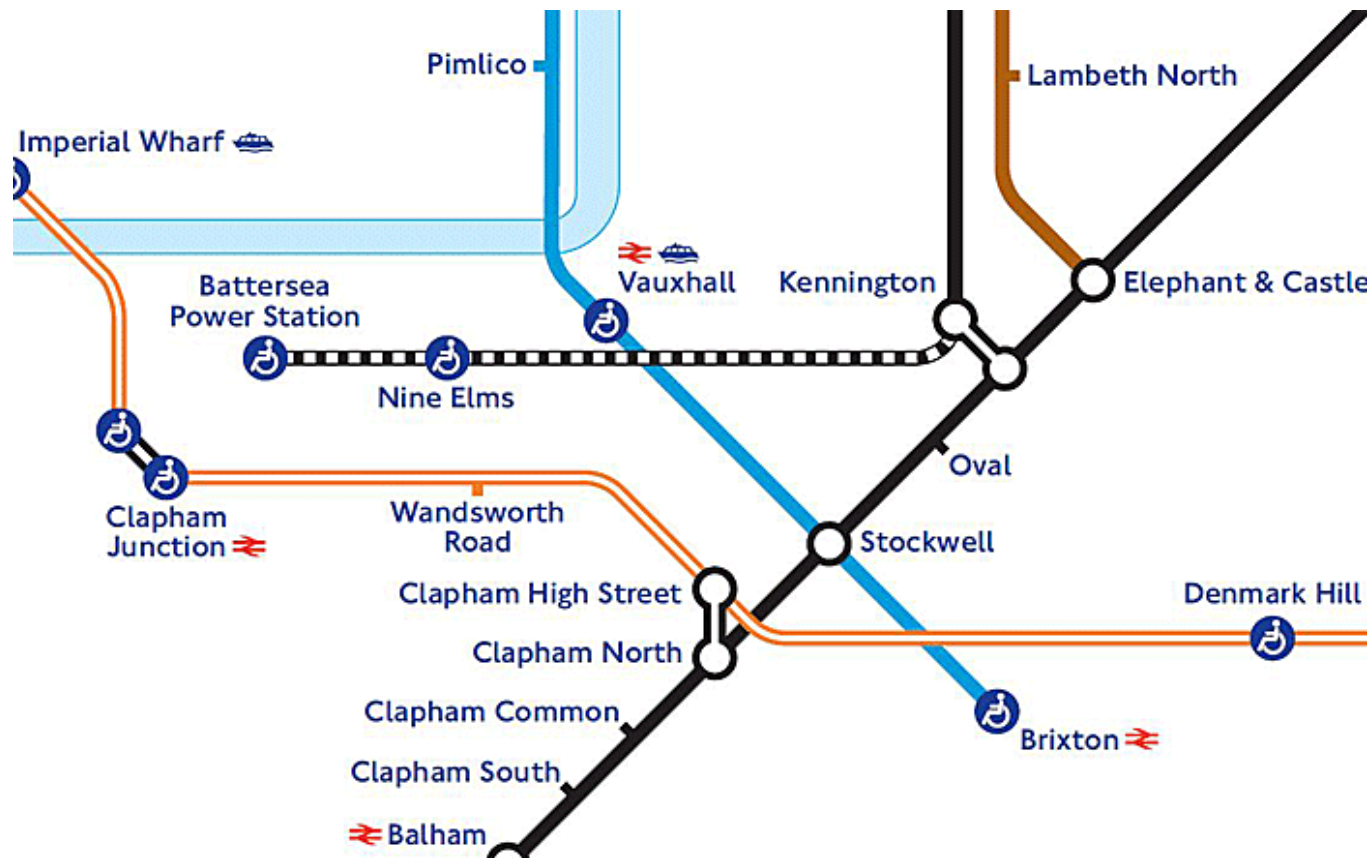
The dedicated site for the NEL project is at [tfl.gov.uk/travel-information/improvements-and-projects/northern-line-extension?cid=northern-line-extension](https://tfl.gov.uk/travel-information/improvements-and-projects/northern-line-extension?cid=northern-line-extension) (<https://tfl.gov.uk/travel-information/improvements-and-projects/northern-line-extension?cid=northern-line-extension>)

The latest newsletter on the NLE project can be read at the following link [content.tfl.gov.uk/nle-quarterly-newsletter-march-2016.pdf](http://content.tfl.gov.uk/nle-quarterly-newsletter-march-2016.pdf) (<http://content.tfl.gov.uk/nle-quarterly-newsletter-march-2016.pdf>)

The main work sites are at:

- Battersea Power Station
- Kennington Green
- Kennington Park
- Nine Elms adjacent to Wandsworth Road and Pascal Street

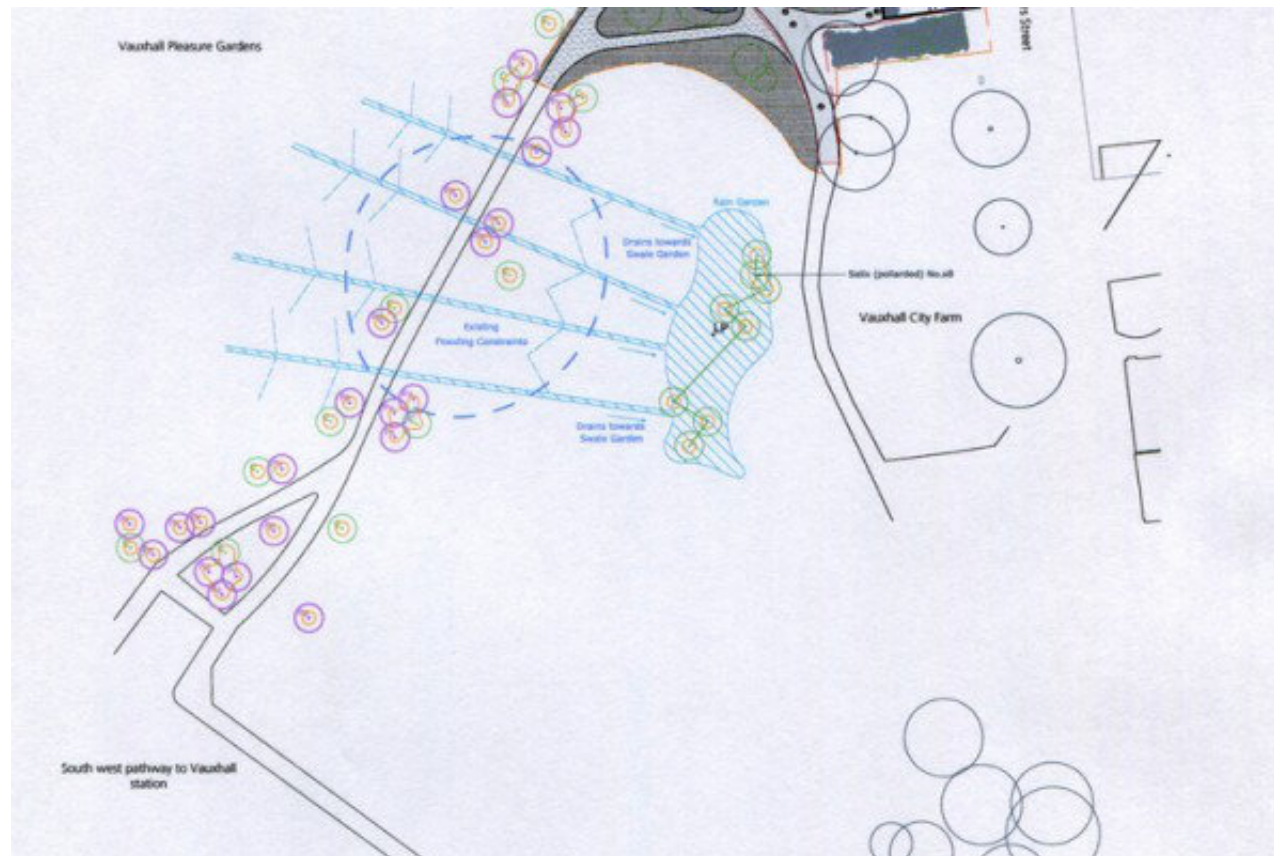
Preparation works started at these sites in spring 2015. In 2017 the main tunnelling will be undertaken from Battersea to the new shafts at Kennington Green and Kennington Park.



### **Cherry Tree Walk plans for Vauxhall Pleasure Gardens**

The Friends of Vauxhall Pleasure Gardens have commissioned renowned landscape architect and historian Todd Longstaffe-Gowan ([tlg-landscape.co.uk](http://www.tlg-landscape.co.uk) (<http://www.tlg-landscape.co.uk>)) to design a cheery tree walk on the diagonal path that leads from the main entrance to the park to the newly built Cabinet gallery and Tyers Street. The ornamental flowering trees will be planted in clusters, will likely be a mix of native and exotic varieties to ensure maximum impact of colour variations, flowering times and

sequencing to prolong the flowers. This will not only maximise the visual effect but also benefit pollinators throughout the spring and summer and allow for greater biodiversity. The project will also tackle the ongoing flooding of the path by raising and rebuilding it, as well as creating a swale gardens where the water will be redirected and absorbed by a cluster of willow trees. The Friends are currently planning to fund the scheme and its maintenance , but are eager to find sponsors that can match fund their investment.



## Citizens' Forum for Southwark and Lambeth Strategic Partnership

The next Citizens' Forum for Southwark and Lambeth Strategic Partnership is on Thursday 19 May from 6.30pm-9.00pm. Please see flyer below for full details

Southwark and Lambeth Strategic Partnership

# CITIZENS' FORUM



Thursday 19 May 2016

6.30pm – 9.00pm

Cambridge House

1 Addington Square

London SE5 0HF

To book your place contact us via:

Email:

[acs-consultation@lambeth.gov.uk](mailto:acs-consultation@lambeth.gov.uk)

Phone: 020 7926 6397

Or register via Eventbrite at:

<https://citizensforummay16.eventbrite.co.uk>

If you have any specific access, communications or dietary needs.

...please do let us know in advance.

- Updates on integrated care, including health and social care services working together, using IT to share information about your health, care networks in your area, and future plans
- Discussions on how to look after your own health, how to help local health and social care services, and how to help other people
- Opportunities to meet people & organisations and get more involved
- Light refreshments available
- Everyone welcome

## **8 Albert Embankment - Update**

Please find below a message from the new development partner for 8 Albert Embankment (Lambeth Fire Station):

*"We are delighted to have been selected by the London Fire and Emergency Planning Authority (LFEPA) as their development partner at 8 Albert Embankment. This Summer, while our early design proposals are being worked up in partnership with LFEPA, we plan to temporarily open up the once loved workshop space behind 8 Albert Embankment. Our aim is to fill this building once again with colour, life and laughter for the community to enjoy. The space will host a pop up London Fire*



*Brigade museum and a programme of events to celebrate the London Fire Brigade's 150 year anniversary. WE WANT TO HEAR FROM YOU On Tuesday 17th May we are holding an open evening and we'd like to hear your thoughts on the space and the type of events you'd like to see taking place. Perhaps you are part of a community group that needs an area to rehearse, a space to exhibit local artwork in, or even a studio space to create your masterpiece. Whatever it might be, we want to hear from you. Even if you don't have any initial ideas for events and just want to come and see the space, please join us for drinks and a chat between 4pm-7pm in the workshop, Lambeth High Street. The entrance is currently on Whitgift Street"*



## **Mary's music morning**

Every Wednesday 10-11am during term time. Free for kids under 5, 'Stay and Play' music sessions. All welcome. St Luke's Hub, 25a Wincott Street, SE11 4NT



## **Lambeth Community Pride Awards**

If you know someone or a group of people who go the extra mile to make a positive contribution to the lives of others in the community, please nominate them by 5 June 2016. Visit [lambeth.gov.uk/communitypride](http://www.lambeth.gov.uk/communitypride) (<http://www.lambeth.gov.uk/communitypride>) for further information.



**EU Referendu > Reminder > Register to vote by Tuesday 7 June**

If you want to vote in the EU Referendum and you are not already registered, you need to register now – visit [gov.uk/register-to-vote](http://www.gov.uk/register-to-vote) (<http://www.gov.uk/register-to-vote>) or call 020 7926 2254 or email [electoralservices@lambeth.gov.uk](mailto:electoralservices@lambeth.gov.uk) (<mailto:electoralservices@lambeth.gov.uk>) Please also pass this on to your neighbours and encourage as many people in our area to register as possible.



Please note that 3rd June 2016 (4pm) is the deadline for any requests for news/updates inclusion in our next newsletter.

**Regards,**

**Chrysostomos (Chrys)**

**KOV Forum Secretary**

**Web** (<http://www.kovforum.org.uk/>) / **Twitter**

(<https://twitter.com/kovforum>) / **Facebook**

(<https://www.facebook.com/KovForum?fref=photo>)



(<http://www.kovforum.org.uk>)

**Disclaimer:** KOV is an apolitical volunteer organisation. We pass on information we believe is useful to the community and do not necessarily endorse any particular views that may be expressed. We can accept no liability for any errors in the information supplied to us.

Share Via:



(htt

[www.kovforum.org.uk](http://www.kovforum.org.uk) 

(<http://www.kovforum.org.uk>)